



PROJECT FACILITIES MAY DIFFER FROM THE IMAGES, AS APPROPRIATE.

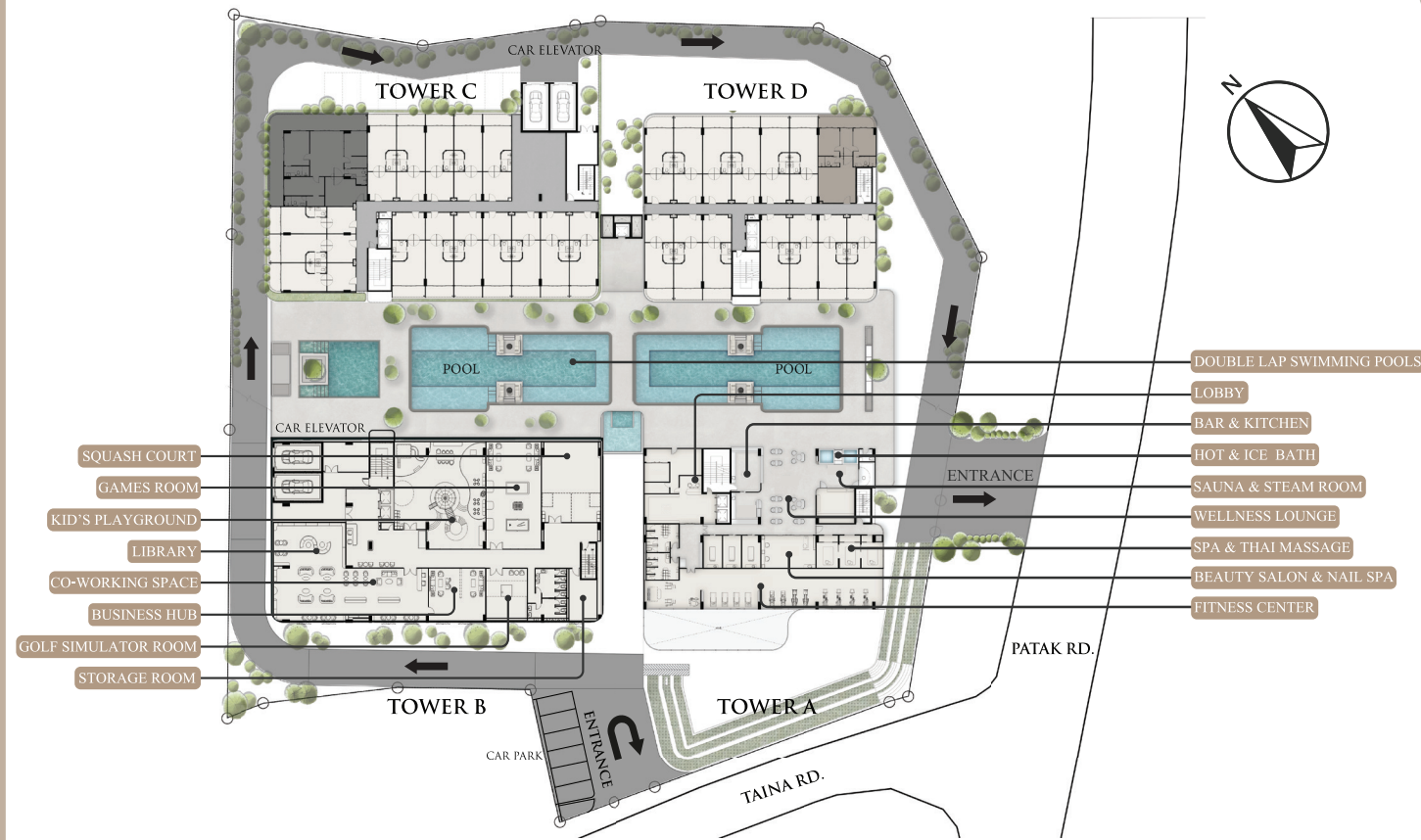
PROJECT INFORMATION

- TOTAL LAND AREA 6 Rai (APPROX.)
- TOTAL UNIT 449 Units
- LOCATION Karon, Phuket
- PROJECT TYPE Low-Rise Condominium 4 Buildings, 8 Floors with Underground Parking
- CAR PARK 50 % (APPROX.)

UNIT TYPE

- 1 Bedroom
- 2 Bedroom
- 2 Bedroom Plus
- 3 Bedroom

MASTER PLAN



Unit Type

- | | | | |
|--|----------------------------------|---------------------------------------|--|
| 1 BEDROOM 51.36-59.48 SQ.M.
● 51.36 51.67 59.48 | 2 BEDROOM 86.66 SQ.M.
● 86.66 | 2 BEDROOM PLUS 97.37 SQ.M.
● 97.37 | 3 BEDROOM 178.85-188.41 SQ.M.
● 178.85 188.41 |
|--|----------------------------------|---------------------------------------|--|

* THIS IMAGE IS A MONTAGE USED TO SIMULATE THE OVERALL CONCEPT OF THE PROJECT.



DOUBLE LAP SWIMMING POOLS

PROJECT FACILITIES MAY DIFFER FROM THE IMAGES, AS APPROPRIATE.



TERRACE

PROJECT FACILITIES MAY DIFFER FROM THE IMAGES, AS APPROPRIATE.



LIVING ROOM



BEDROOM



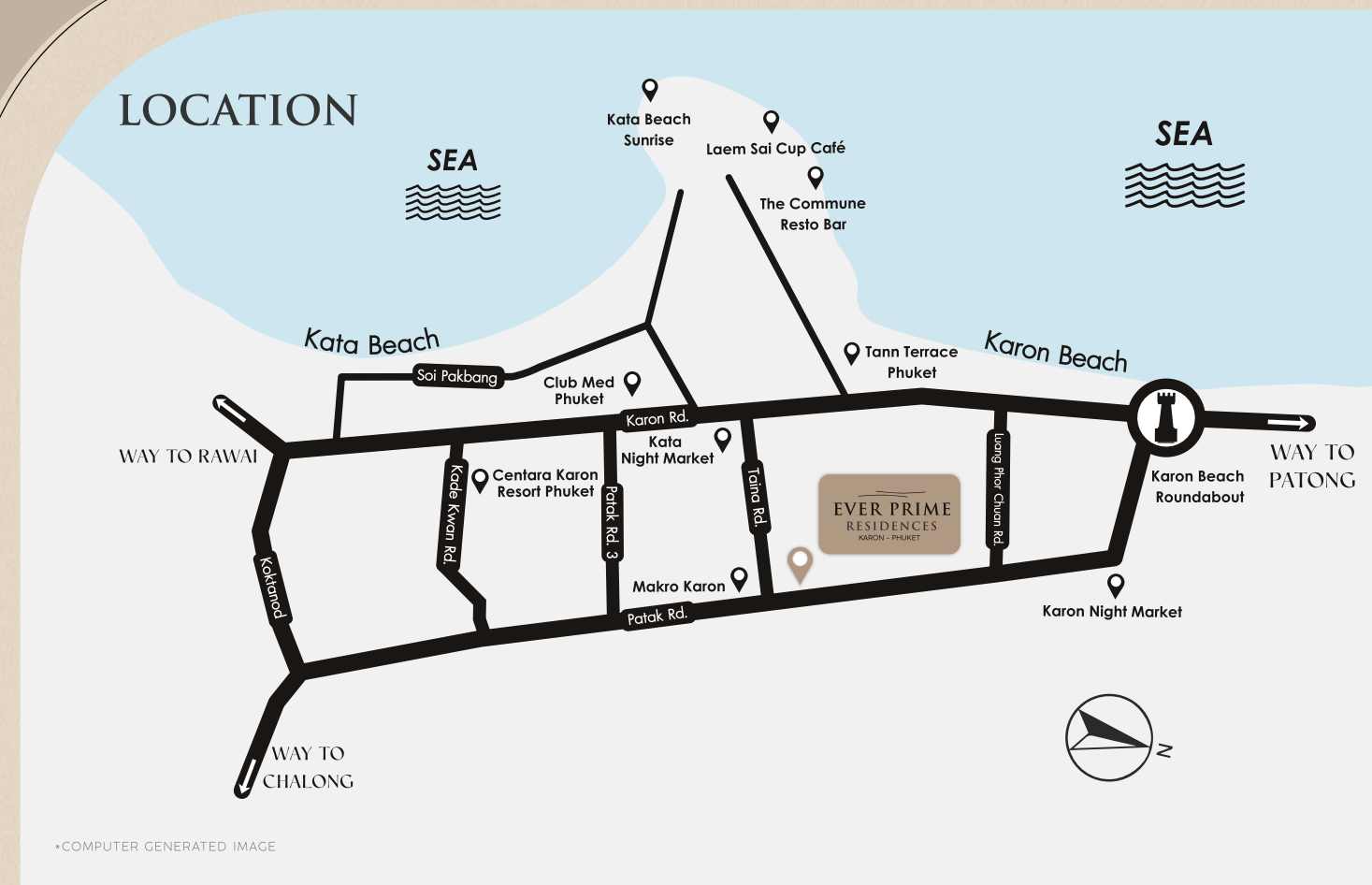
EVER PRIME
RESIDENCES
KARON - PHUKET

DISCOVER
YOUR
FUTURE HOME

FACILITIES

- Double Lap Swimming Pools
- Ocean View Rooftop Swimming Pool
- Kid's Pool
- Kid's Playground
- Hot & Ice bath
- Sauna & Steam room
- Spa & Thai Massage
- Beauty Salon & Nail Spa
- Fitness Center
- Yoga Center
- EV Charging
- Villa Market 24 hours
- Chiang Mai Coffee
- Co-Working Space
- Business Hub
- Library
- Wellness Lounge
- Lobby
- Storage Room Service
- Games Room
- Golf Simulator Room
- Squash Court

PROJECT FACILITIES MAY DIFFER FROM THE IMAGES, AS APPROPRIATE.



DEPARTMENT STORES & LIFESTYLE SHOPPING MALLS	LEISURE & LIFESTYLE	INTERNATIONAL SCHOOL	HOSPITAL	BEACHES
KATA NIGHT MARKET 0.8 KM.	DINO PARK MINI GOLF 0.9 KM.	ISP INTERNATIONAL SCHOOL PHUKET 0.6 KM.	HEALTH PLUS MEDICAL CLINIC PHUKET 0.2 KM.	KATA BEACH 0.9 KM.
KARON NIGHT MARKET 2.8 KM.	THE COMMUNE RESTO BAR 1.3 KM.	BCIS INTERNATIONAL SCHOOL PHUKET 8.2 KM.	KARON HEALTH CENTER PHUKET 2.9 KM.	KARON BEACH 1.4 KM.
ROBINSON LIFESTYLE CHALONG 9.0 KM.	CHALONG PIER 5.8 KM.	RUAMRUDEE INTERNATIONAL SCHOOL PHUKET 10.5 KM.	CHALONG HOSPITAL PHUKET 6.0 KM.	NAI HAN BEACH 8.2 KM.
CENTRAL PRIONG 11.0 KM.	SKYLINE ADVENTURE PHUKET 5.8 KM.	OAK MEADOW INTERNATIONAL SCHOOL PHUKET 10.9 KM.	PRIONG HOSPITAL PHUKET 10.1 KM.	PRIONG BEACH 8.9 KM.
JUNCCYLON SHOPPING CENTER 11.1 KM.	SIMON CABARET PHUKET 7.8 KM.	KAJONKIE INTERNATIONAL SCHOOL PHUKET 12.6 KM.	DIBUK HOSPITAL PHUKET 13.3 KM.	RAWAI BEACH 11.9 KM.
RAWAI SEAFOOD MARKET 11.3 KM.	FROGGY'S FUN PARK 11.1 KM.	HEADSTART INTERNATIONAL SCHOOL PHUKET 14.5 KM.	BANKOK SIRIROJ HOSPITAL PHUKET 16.1 KM.	KAMALA BEACH 19.7 KM.
CENTRAL PHUKET FLORESTA 14.9 KM.	TIGER KINGDOM PHUKET 14.8 KM.	QSI INTERNATIONAL SCHOOL PHUKET 17.8 KM.	BANKOK HOSPITAL PHUKET 18.3 KM.	SURIN BEACH 23.4 KM.



Scan QR Code
For More Information

+66 (0) 99 259 6525, + 66 (0) 85 562 1146, +66 (0) 96 186 8888

www.everprimecondo.com



EVER PRIME
RESIDENCES
KARON - PHUKET